

Double Temperature System for HD60/72/120 multi rooms

Double Temperature System for HD65 / 2.5ton

Direct Driven Unit



HT-250 II Condenser



HT-100 II Evaporator for frozen



HT-050 II Evaporator for fresh

Model name	Condenser	Size(mm) Weight(kg)	Evaporator	Size(mm) Weight(kg)	Application	Compressor	Controller
HT-250 DTS	HT-250 II	1120*496*395 32	HT-100 II	1040*669*168 24	FROZEN (UP TO -20°C)	TM16	HT-730
			HT-050 II	840*629*163 20	FRESH (UP TO 0°C)		

Double Temperature System for HD72 / 3.5ton

Direct Driven Unit



HT-500 II Condenser



HT-250 II Evaporator frozen



HT-100 II Evaporator for fresh

Model name	Condenser	Size(mm) Weight(kg)	Evaporator	Size(mm) Weight(kg)	Application	Compressor	Controller
HT-500 DTS	HT-500 II	1120*496*395 32	HT-250 II	1200*689*170 29	FROZEN (UP TO -20°C)	TM21	HT-730
			HT-100 II	840*629*163 20	FRESH (UP TO 0°C)		

Twin Temperature System for HD62/HD72 /2.5~ 3.5ton

Direct Driven Unit

HT-250 Gemini of Hwasung Thermo comprises two-piece split units designed for fresh, frozen or deep frozen applications on trucks. Two systems(condenser, evaporator and compressor each) operated independly for each comparments.



HT-250 Gemini Condenser



Two Separate condenser coils in One Condenser case



HT-250 II Evaporator



HT-250 II Evaporator



Compressor TM15 x 2ea



Temp. Controller x 2ea

Model name	Condenser	Size(mm) Weight(kg)	Evaporator	Size(mm) Weight(kg)	Application	Compressor	Controller
HT-250 GEMINI	HT-250 Gemini	1733*620*675 50	HT-250 II	1200*689*170 29	FROZEN (UP TO -20°C)	TM15 x 2	HT-730 X 2
			HT-250 II	1200*689*170 29	FROZEN (UP TO -20°C)		

Double Temperature System for HD120 / 5ton

Diesel Engine Driven Unit

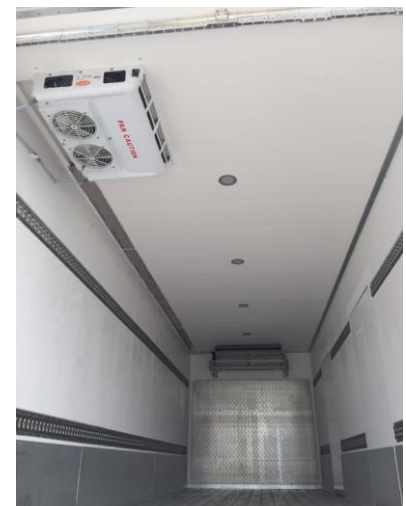
Diesel engine driven units designed for two compartments. One pieced HT-50DW refrigeration unit operated for frozen and the additional second evaporator operated for fresh product.



HT-50DW DTS



2nd Evaporator for fresh



Model name		Size(mm) Weight(kg)	2nd Room Evaporator	Size(mm) Weight(kg)	Application	Engine Compressor	Controller
HT-50DW DTS	Condenser	1910*899*665	HT-100 II	840*629*163 20	1st Room FROZEN (UP TO -20°C)	Yanmar 3TNV76 Bock FXK40/390	600NB-2
	Evaporator	1200*820*410					
	Engine driven	522			2nd Room FRESH (0 TO 10°C)		
	With Electric standy	570					